

# CURVES - EXAMPLES

## Mosfet N/P Channel

- ID vs. VDS (at range of VGS)
- ID vs. VGS (at range of VDS)
- IS vs. VSD
- RDS vs. VGS (at fixed ID)
- RDS vs. ID (at several VGS)
- IDSS vs. VDS (Reverse Bias Selectable)
- VGTH vs. ID
- IGSS vs. VGS

## Transistor NPN / PNP

- HFE vs. IC
- BVCE(O,S,R,V) vs. IC
- BVEBO vs. IE
- ICBO vs. VCEO
- VCE(SAT) vs. IC (at fixed IC/IB ratio)
- VCE(SAT) vs. IB (at range of IC)
- VBE(SAT) vs. IC (at fixed IC/IB ratio)
- VBE(ON) vs. IC (at fixed VCE)
- IC vs. VCE (at range of IB)(Curve Tracer only)
- IEBO vs. VEB
- ICEO vs. VCE

## IGBT N/P Channel

- IC vs. VCE (at range of VGE)
- IC vs. VGE (at range of VCE)
- ICES vs. VCE
- IF vs. VF
- VCE vs. VGE

## Diode

- IF vs. VF
- IR vs. VR

## Zener

- IF vs. VF
- IZ vs. BVZ

## TRIAC

- IT vs. VT+ (at fixed IG and RGK open)
- IT vs. VT- (at fixed IG and RGK open)

## SCR

- IT vs. VTM (at fixed IG and RGK open)

## SSOVP

- IT vs. VT+ (at fixed IBO)
- IT vs. VT- (at fixed IBO)

## SIDAC

- IT vs. VT+ (at fixed IBO)
- IT vs. VT- (at fixed IBO)

## DIAC

- ID vs. VF+
- ID vs. VF-

## Regulator Positive

- Electronic Load vs. VOUT (at fixed IMAX)

## Regulator Negative

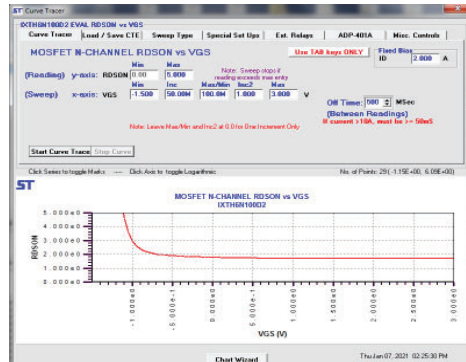
- Electronic Load vs. VOUT (at fixed IMAX)

## JFET N/P Channel

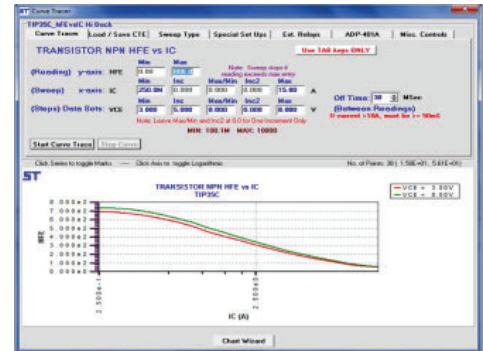
- ID(OFF) vs. VDS (at range of VGS)
- ID(OFF) vs. VGS (Reverse Bias) (at fixed VDS)
- ID(ON) vs. VDS (at range of VGS)
- ID(ON) vs. VGS (Reverse Bias) (at fixed VDS)

## Other Curves

- V vs. I Quadrants I and III
- I vs. V Quadrants I and III



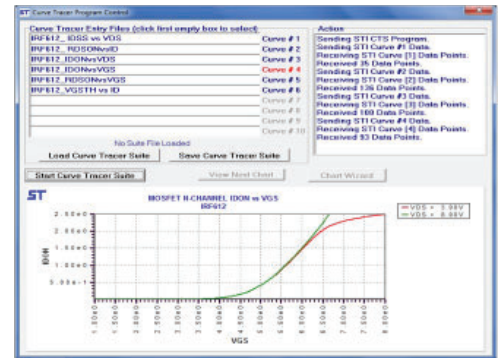
NMOS RDSON vs VGS (Figure 1)  
Depletion Mode Device



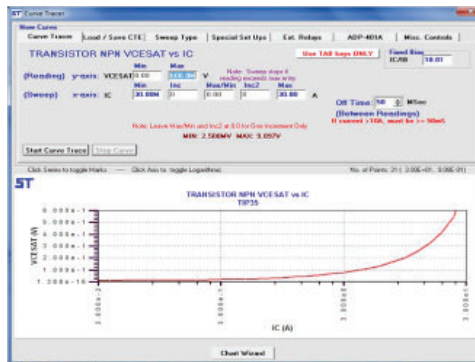
NPN hFE vs IC (Figure 2)



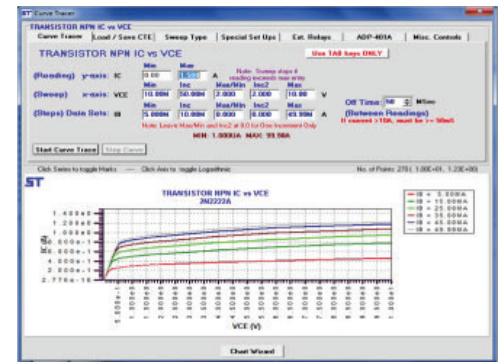
N JFET, IDON vs VDS (Figure 3)



CURVE SUITE (Figure 4)

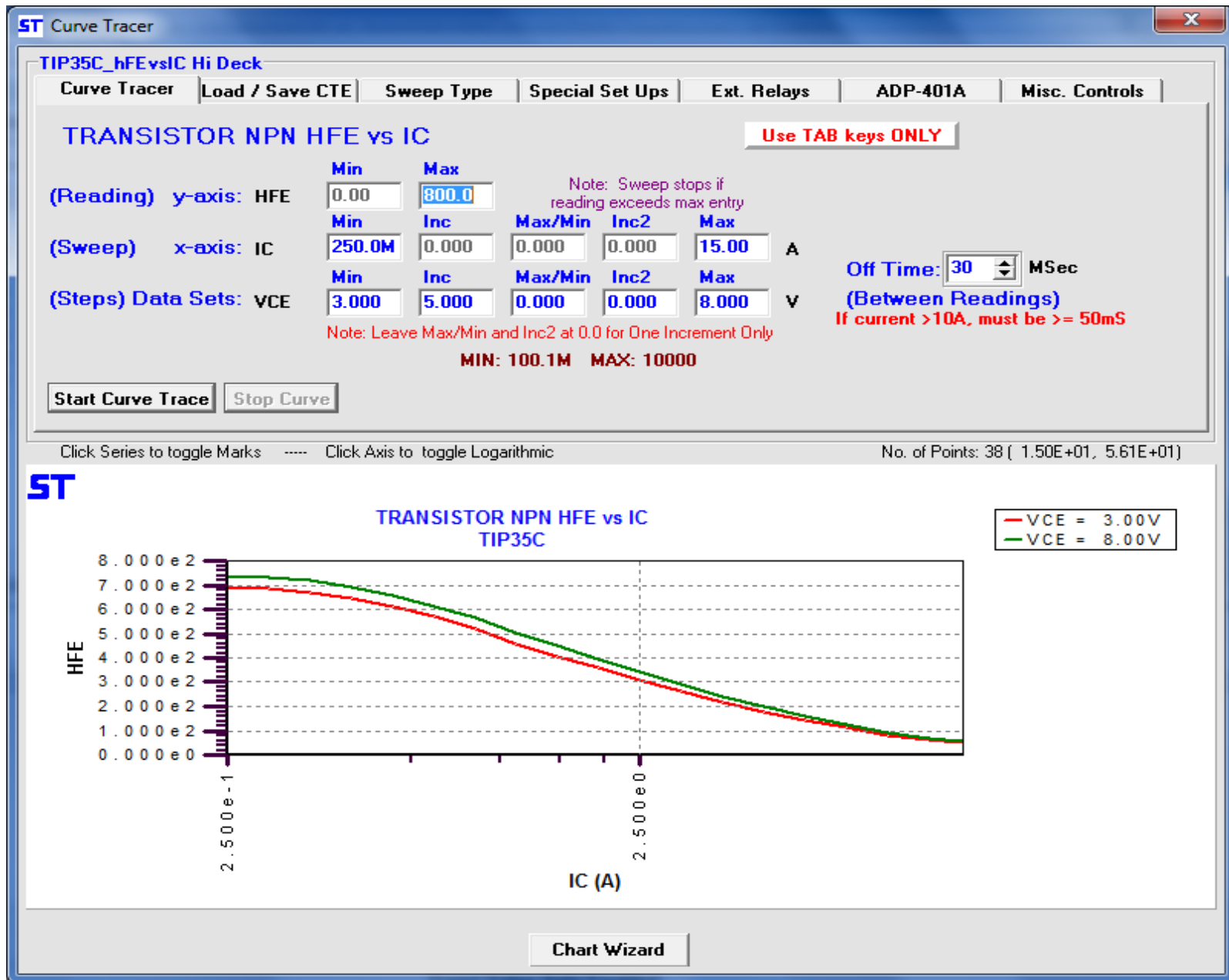


NPN VCESAT vs IC, IC/IB Fixed Ratio (Figure 5)

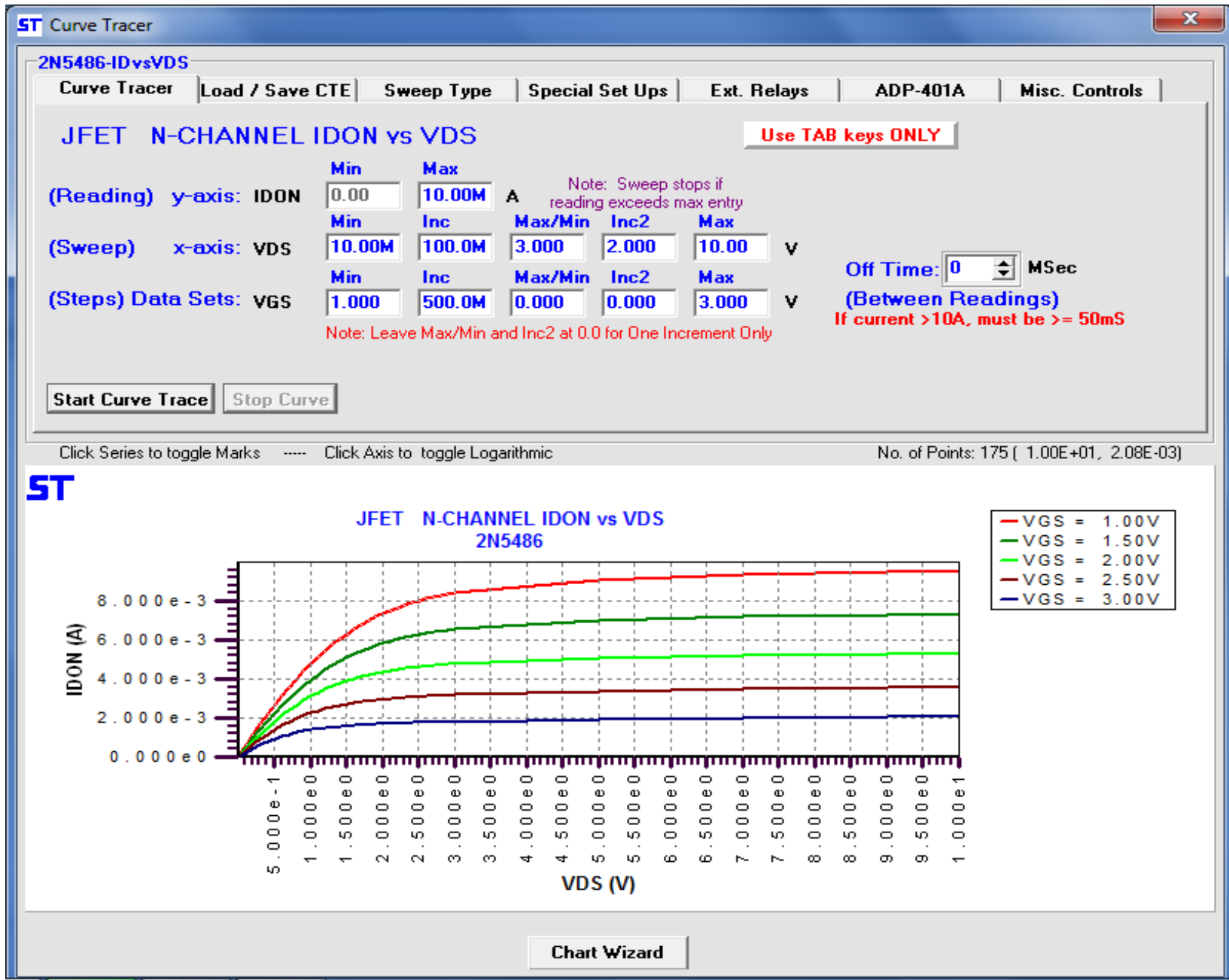


NPN IC vs VCE (Figure 6)

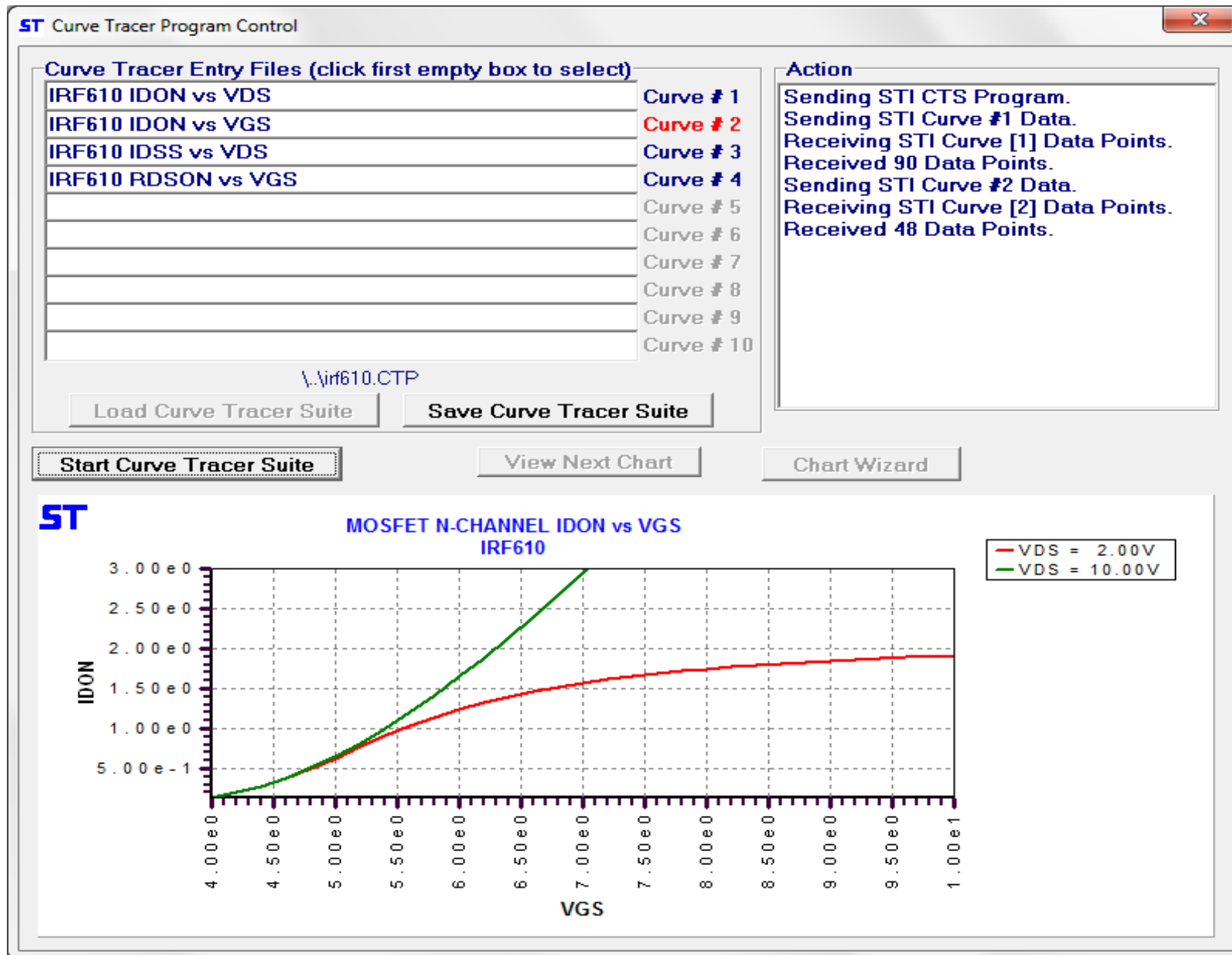
# HFE vs IC



# IDON vs VDS



# CURVE SUITE



# V<sub>CESAT</sub> vs I<sub>C</sub>

